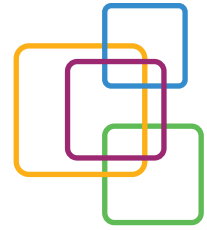


Access Control Systems
Integrated Security Systems
Hotel and Wellness
Time & Attendance



An Open-Platform System



SiS - Seawing Integrated Solution

General outlines

 **SEAWING**

Entry into a secure world.

www.seawing.hu

SEAWING INTEGRATED SOLUTION

GENERAL CHARACTERISTICS

The system called **SiS** or **Seawing Integrated Solution** is designed to combine the advantages of security and facility management systems. SiS is a new generation system, uniting all subsystems within a building.

SiS provides surveillance on subsystems as follows:

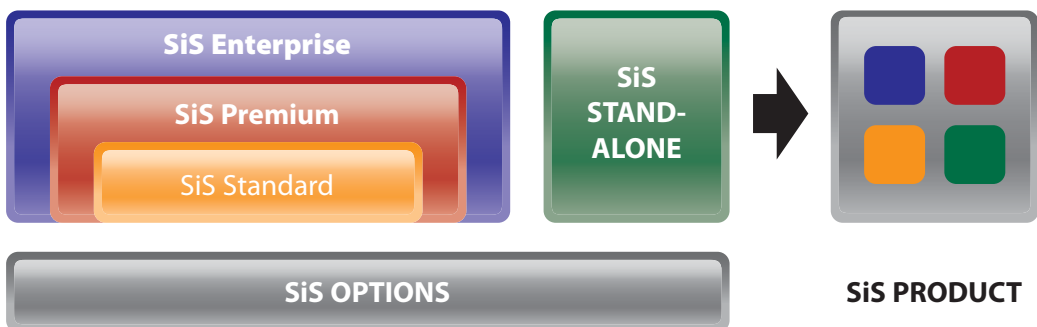
- ✓ Access control systems
- ✓ CCTV
- ✓ Fire alarm systems
- ✓ Intruder alarm systems
- ✓ Facility management systems

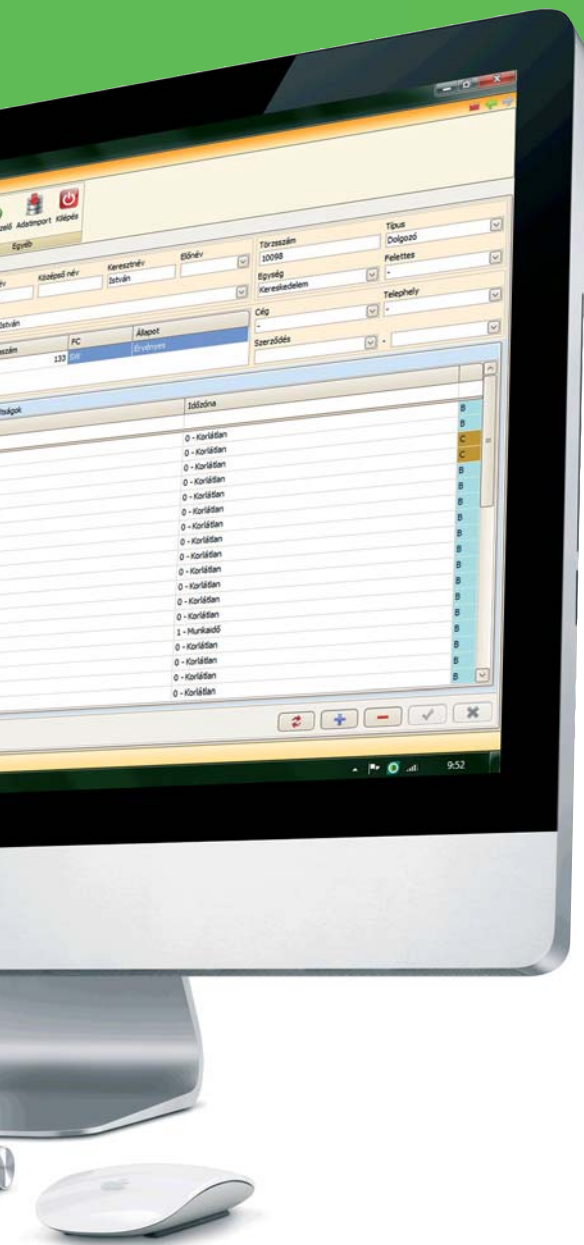
uniting all subsystems within a facility



Incorporating all know-how that SEAWING Kft. has accumulated so far, this new software employs time-honoured solutions and database / network management technologies.

SCALABLE FUNCTIONALITY





INTENDED PURPOSE OF SiS SEAWING INTEGRATED SOLUTION

SiS offers solution for control over a number of different systems, ranging from those with one or two sensors through small-size applications installed on a LAPTOP to worldwide security and facility surveillance installations of an international company.

SiS is capable of communicating with other applications for corporate data synchronization. Such synchronization may exist between SiS and an HR system, and SiS may as well supply data to other systems.

ensuring data synchronization

SiS HAS THE ADVANTAGE of easy interfacing with other software platforms commonly used in information technology, with the software ensuring flexible interfacing with other systems. Thanks to its open platform, SiS allows vendor-independent integration of subsystems.

ACCESS CONTROL MODULES

General access control

Card personalization

Number plate recognition

Biometric identification

SiSCOM - COMMUNICATIONS MODULE

SURVEILLANCE MODULES

Intruder alarm management

CCTV management

Fire alarm management

Facility management



SiS PRODUCT

SEAWING INTEGRATED SOLUTION

SiS SOLUTION MANAGEMENT - QUICK

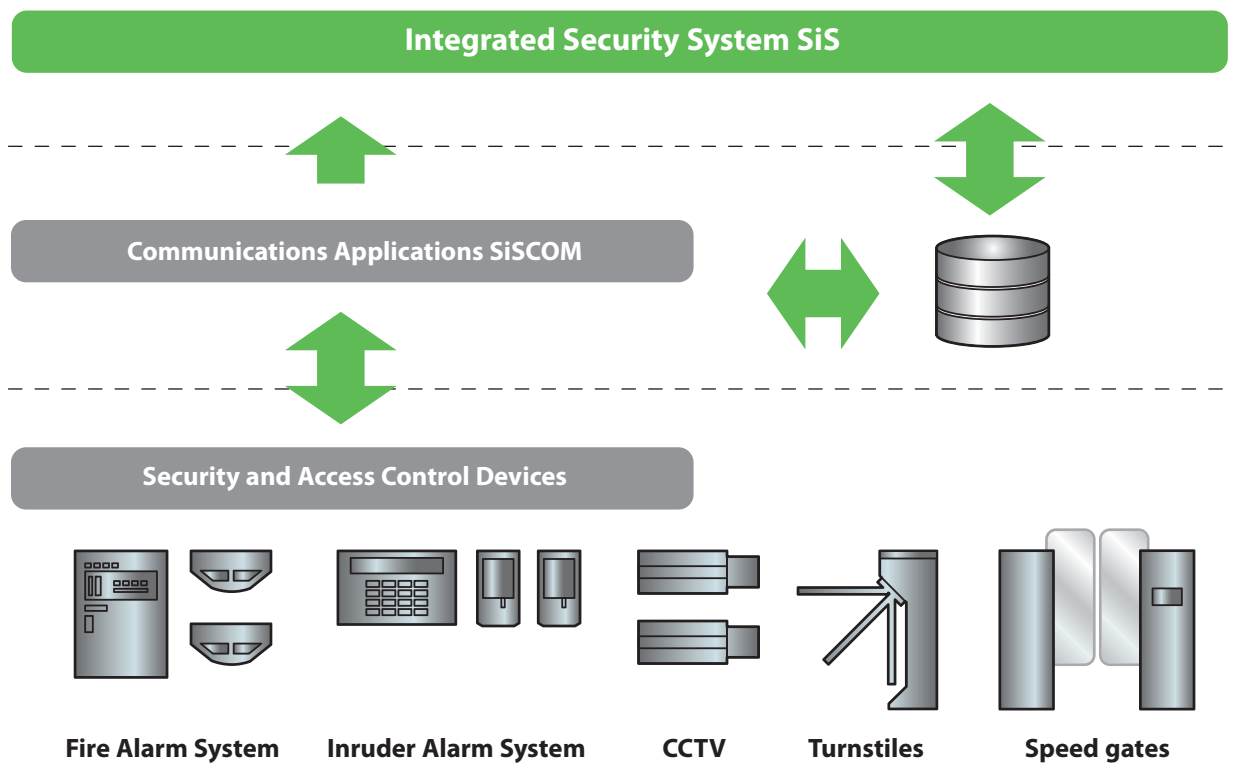
For the processing of any event as may take place in the system, **SiS** implements a two-level event management model. This model consists of two separate computer program modules with a well-defined range of tasks each, communicating with each other via an information network on an ongoing basis. Essentially, the overall event handling process is split on the basis of a predefined division of tasks.

On a first or lower level, data processing takes place, including such operations as collection of data from hardware devices, transmission of data via the information network, and storage of data in a computer database.

On this same level, control commands and data queries are forwarded to field devices.

On a second or higher level, data are sorted, grouped, and visualized or updated via a user interface. In addition, this processing level allows evaluation of data, and performance of necessary user actions and operations. This program module communicates with the lower-level module via the database.

This two-level data handling application ensures quicker and safer data management, and shorter response times, than most existing systems do.

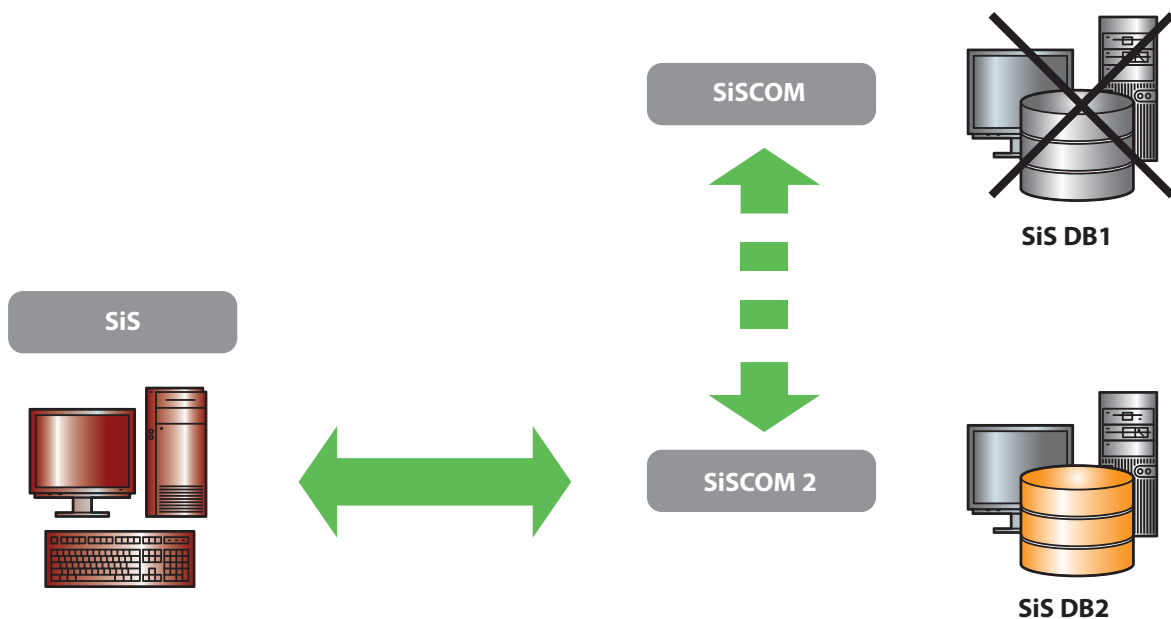




ONLINE AVAILABILITY - RELIABLE

The online availability feature increases system reliability. The program modules of the product are designed to get linked, in an online and automatic manner, with any of several databases which, defined as hot spare for one another, may

as well be hosted by separate servers. In addition, the lower-level program module offers a dynamic module substitution function, which means that it can take over the tasks of another communications program module in the system (Substitution).



ENCRYPTED COMMUNICATIONS - SECURE

SiS is a solution with an extremely high level of security for software-based management of system elements and networks.

All communications within the system are encrypted. Personal data handling complies with data security regulations in force.

Our software is designed to meet any local regulation pertaining to data management which may vary from country to country.

SEAWING INTEGRATED SOLUTION

SiS FOR CONVENIENCE

MULTILINGUALISM

Developed in English and Hungarian, the software incorporates an integrated translation interface for broadening the range of language options to preference.

REMOTE ACCESSIBILITY AND NOTIFICATION

Persons with appropriate rights may access and supervise the system from any remote location.

The system can be configured to send e-mail or SMS notifications of predefined events or ensure timed submission of lists via e-mail.





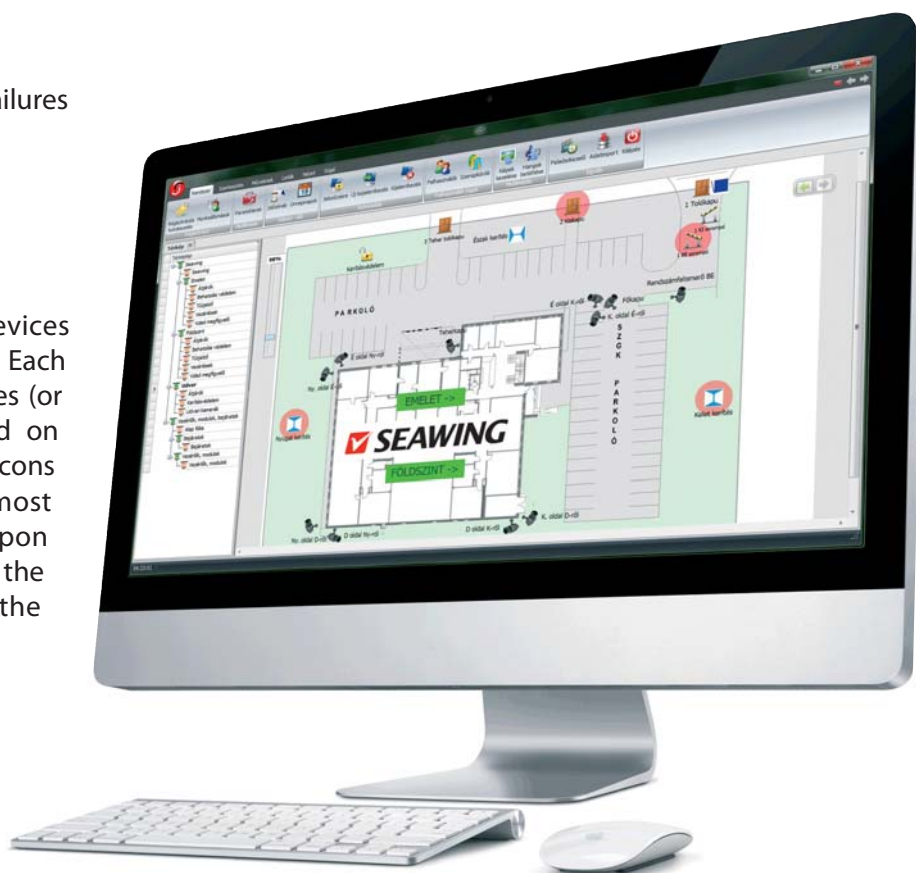
Map management with switchable layers

EFFICIENT FAILURE ANALYSIS & ADVANCED LOGGING

- ✓ Failure counters
- ✓ Diagnostic checking for run times of critical processes
- ✓ Diagnostics for device communication failures
- ✓ Diagnostics for network failures

MAP MANAGEMENT

The system visualizes devices against a graphic background. Each map consists of transparencies (or layers) that can be switched on and off. The user should click icons to gain access to the most common functions. Upon occurrence of an alarm event, the device which has caused the alarm will be highlighted.



MODULARITY

SIS has a modular design to meet any requirement as may be specified for a system, whether small or big. It is also suitable for upgrading existing systems.

If the goal is to increase the efficiency of an existing security system or make system management easier, SiS is an excellent choice.

SEAWING Fejlesztő és Szolgáltató Kft.

Palánkai u. 5., Székesfehérvár, H-8000, Hungary

phone: +36 22 510 170 • fax: +36 22 510 171

e-mail: sales@seawing.hu



Entry into a secure world.

www.seawing.hu